

# Operation Manual

Printer Driver Windows™ NT 4.0

Version: 1.2

# TOP-*ino*



***State: April 1999***

## Table of Contents

1. Introduction.....	2
2. System Requirements.....	2
3. Installing the Windows™ - NT Printer Driver.....	3
4. Setting Up the Windows™ – NT Driver.....	3
4.1 Printer-Properties- Device Settings .....	3
4.2 Advanced Settings.....	4

### 1. Introduction

---



The **TOP-ino** (Ill. 1) can be used with Windows™ - NT 4.0 application software. Before you are printing, set in your application the **TOP-ino** printer. For this you only have to install the software, which called „Printer Driver“. After installing the printer driver please keep the diskette in a safe place.

**Note:** *This version supports the Centronics – Interface only.*

### 2. System Requirements

---

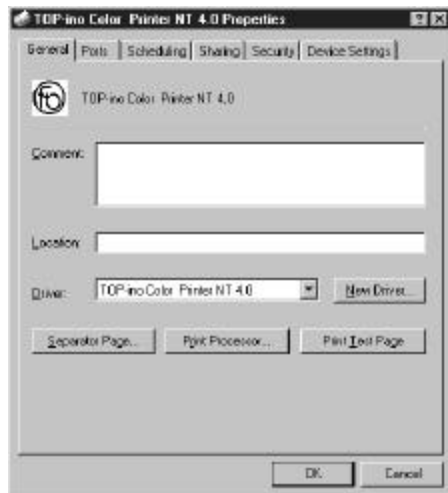
The **TOP-ino** printer driver is running under the following conditions:

- Windows™ NT 4.0
- Pentium or higher, min. 32 MB RAM



### 3. Installing the Windows<sup>TM</sup> - NT Printer Driver

---



III. 2

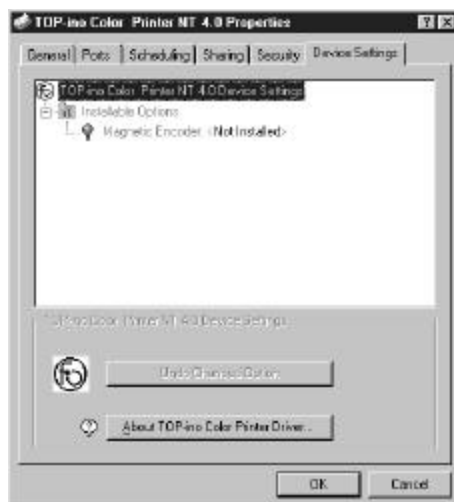
1. Start Microsoft Windows<sup>TM</sup> NT.
2. Select the button Settings.
3. Select the button Printers.
4. Double click on the ADD PRINTERS >> .  
Select the button File OPEN.
5. Select the My Computer and button NEXT.
6. Set the port (normally LPT1) and the button Next.
7. Select the button HAVE A DISK.
8. Insert the **TOP-ino** - printer driver disk into your disk drive.
9. Enter the name of the disk drive (i.e.: A:\)  
Select the OK button.
10. Then appears **TOP-ino** Color Printer NT 4.0  
Select the Next button.
11. Keep existing driver and select Next.
12. After **TOP-ino** Color Printer NT 4.0 appears on the display set No and select the NEXT button.
13. Select No shared and the button Next.
14. Select Test Page No the button Finish.  
Now the files copying into the printer folder.

### 4. Setting Up the Windows<sup>TM</sup> – NT Driver

---

#### 4.1 Printer-Properties- Device Settings

---



III. 3

Select the Device Settings button in the **TOP-ino** Color Printer NT 4.0 Properties (III. 2).

You can set the following characteristics:

#### Installable Options

*Magnetic Encoder*

This option require a magnetic encoder in the printer.

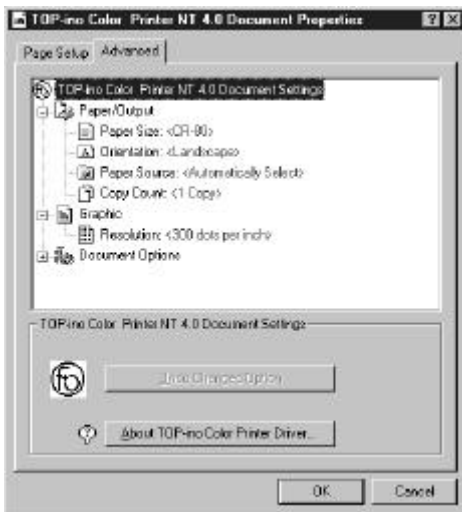




III. 4

Selecting **About TOP-ino Color Printer** from Ill. 3, the result is showing in the Ill. 4. Here you find the addresses and the e-mail address.

## 4.2 Advanced Settings



III. 5

These setting are from your application

### Paper Output Graphic Document Options

#### Paper Output

##### Paper Size

According to the ISO 7810 (CR 80) (54 x 85 mm)

##### Orientation

You can print in the Portrait- or the Landscape-Mode. Sometimes the format is pre-set from the application.

**Note:** Also the format can be set in the application.

##### Paper Source

Automatically Select

##### Copy Count

Quantities of copies.

**Note:** In some applications you can set the quantity there.



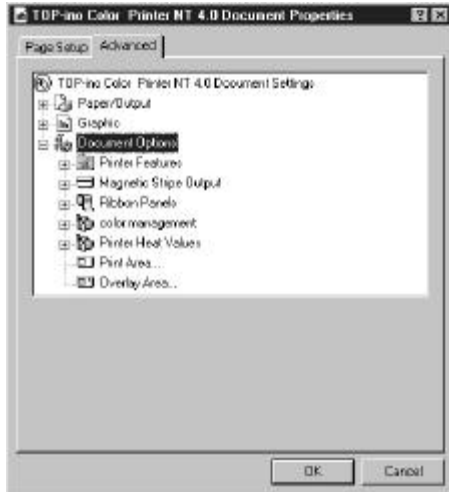
III. 6

### Graphic

#### Resolution

This parameter is set to 300 dpi.

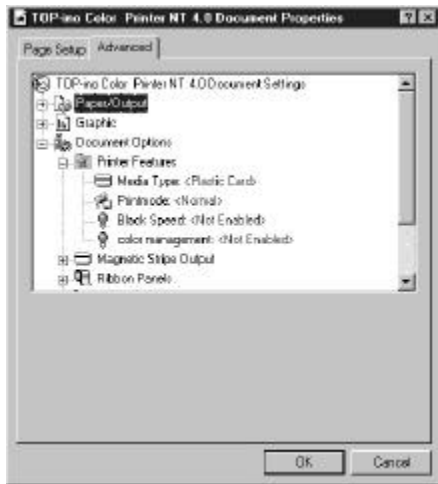




**Document Options**

- Printer Features
- Magnetic Stripe Output
- Ribbon Panels
- Color Management
- Printer Heat Values
- Print Area
- Overlay Area

III. 7



**Printer Features**

- Media Type*
  - Plastic Card or Magnetic Encoder
- Printmode*
  - Normal
- Black Speed*
  - Not Enabled
  - Standard print speed: 20 mm/sec
  - Enabled
  - Print Speed: 40 mm/sec
- Note:** For printing text use – **enable**
- Color Management*
  - Not Enabled
  - Enabled: An additional color adjustment for the printer.

III. 8

**Magnetic Stripe Output**

- Magnetic Encoder Options
- Set one of the following options:

- Read/Write*
- Code the magstripe and verify the data on the stripe
- Read only*
- Read only the data from the magstripe
- None*
- No activities with the magnetic stripe.

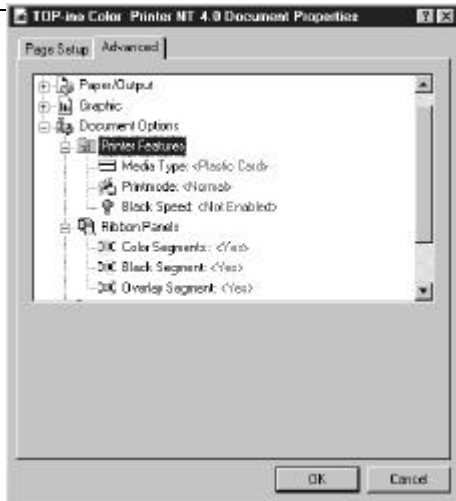
**Note:** Set the magnetic stripe options enable in the Printer Properties –Device Settings.



- Track One**
- Set the characters for this track according the ISO 7811 standard (alphanumeric, max. 37 characters.
- Track Two**
- Set the characters for this track according the ISO 7811 standard (numeric, max. 76 characters.
- Track Three**
- Set the characters for this track according the ISO 7811 standard (numeric, max. 104 characters.

III. 9





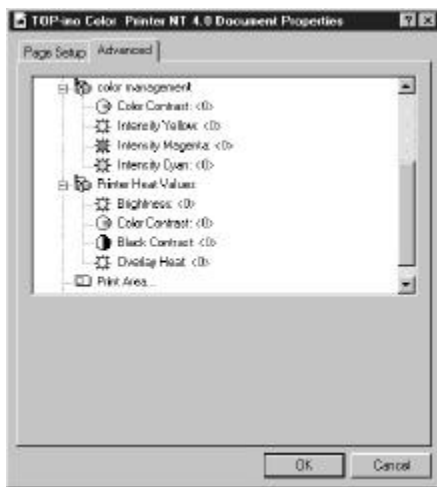
**Ribbon Panels**

You can select the necessary panels for the printing of your card. You have the choice to select:

- Color Segments (YMC)
- Black Segment (K)
- Overlay Segment (O)

**Note:** And check your ribbon type, which you set in the printer.

III. 10



**Color Management**

After selecting the buttons Color Management you see the III. 11. By changing the parameters Color Contrast, Intensity Yellow, Magenta and Cyan it is possible to change the printed colors.

Note: The Color Management takes around 1sec more time. Before you have to enable this option in the Printer Feature.

**Printer Heat Values**

After selecting the buttons Printer Heat Values you see the III. 11. By changing the parameters Brightness, Color Contrast, Black Contrast and Overlay Heat you are changing the color on the card and the print quality.

**Note:** Increase Brightness - lighter printing.

**Note:** Increase the Color Contrast - more color contrast at the printed card.

Black Contrast—for the resin black panel.

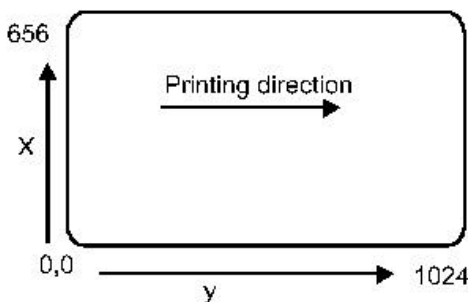
III. 11

**Note:** Be careful to increase the contrast, because is stress the thermalhead. Also increase the printing speed for the black panel.

**Note:** Increasing the Black Contrast will result in a more contrasting black on the card.

Overlay Heat—for the overlay quality.

**Note:** The overlay heat should be set accurate, because here you can see the printing quality.



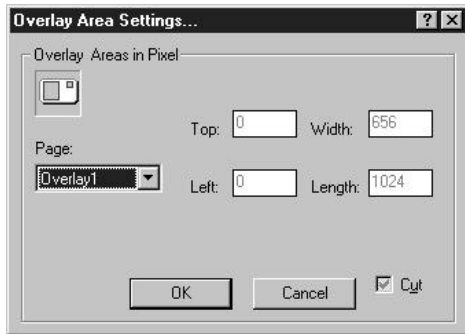
III. 12

**Print Areas**

For customised applications some times it is necessary to define the printing area (standard: full). By this way it is possible to increase the print performance. Please see the following drawing, how to set the parameters (1 mm =12 pixel).

**Note:** These 1024 x 656 are for the full bleed printing. For safety is use only a printing area 1020 x 648 pixels.

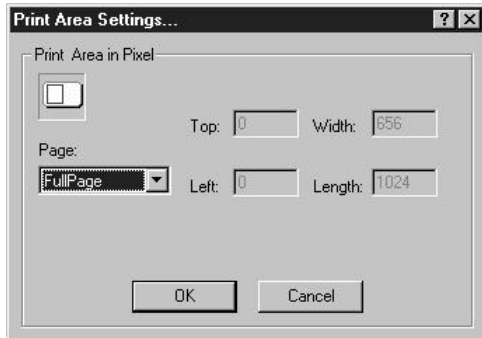




III. 13

### Overlay Areas

You can set up to four overlay-segments (set or **Cut**). See the drawing, how to set these parameters (1 mm =12 pixel). In case the Cut area is in grey ton background, the cutting function is deactivated.



III. 14

*Windows is a trademark of the Microsoft Corporation.*

